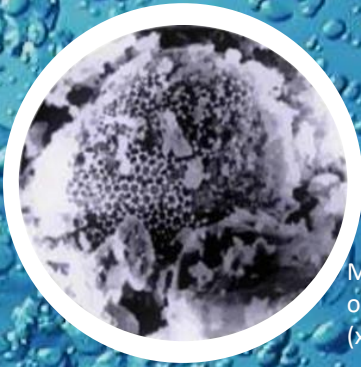


# Miro Prime

NET20kg/bag  
shell fossil, heat-treated



Magnified photograph  
of a rough stone Microscope  
(x1000)



- **100% natural mineral**
- **No animal-derived protein contained.**

## Soft porous ancient marine humic substance

The Earth's oceans which have been called water stars since ancient times are the birthplace of life. Since tens of millions of years ago, burying and accumulating of marine animals and plants (Nektons, planktons, algae, seaweed, and other organisms) had repeated at the bottom of the ancient sea. Decomposition, metabolism, and resynthesizes had been by microorganisms continued over the years and it made sea mud contains plenty of and variety of minerals. The dynamic geological forces lifted the primeval seabed to the surface, revealing ancient marine soil with soft, porous properties. **Miro Prime** is 100% natural resource collected from geological layers that protrude to the ground due to crustal changes.



## Main utility

- ✓ Improve feed efficiency
- ✓ Improve the quality of meat, milk and eggs
- ✓ Improves breeding performance by supplementing well-balanced minerals
- ✓ Deodorizing livestock excrement, promoting fermentation of compost
- ✓ Prevents feed spoilage and mold
- ✓ Addition to liquid feeds and TMR

## Main Component of Miro Prime

Composition Analysis (%) / heat treated

Silicon oxide (SiO <sub>2</sub> )	55.2	Phosphorus oxide (P <sub>2</sub> O <sub>5</sub> )	0.07
Aluminum oxide (Al <sub>2</sub> O <sub>3</sub> )	13.0	Cobalt oxide (CoO)	0.06
Iron oxide (Fe <sub>2</sub> O <sub>3</sub> )	4.1	Sodium oxide (Na <sub>2</sub> O)	0.05
Calcium oxide (CaO)	3.6	Manganese oxide (MnO)	0.04
Magnesium oxide (MgO)	1.6	Barium (Ba)	0.007
Sulfur (S)	1.1	Zinc (Zn)	0.006
Potassium oxide (K <sub>2</sub> O)	0.473		
Oxidized titanium (TiO)	0.16	pH	7.4

Cesium : none (checked by Environmental laboratory Co., Ltd.)

A wide variety of minerals support good health.

## Milo Prime feeding rates per 1 day

breeding cattle ▶▶▶ 150g	breeding pig ▶▶▶ 100g
fed cattle ▶▶▶ 100g	fed pig ▶▶▶ 50~100g
dairy cattle ▶▶▶ 100~150g	piglet ▶▶▶ proper quantity
chicken ▶▶▶ 1% per feed	

Origin: Tanakura, Fukushima Pref. Japan

<Manufacturer and distributor>

Bio Techno Net Co., Ltd  
 1-21, Mansion Rikyu #41, Wakaba,  
 Shinjuku-ku, Tokyo, 160-0011  
 Tel +81-03-5369-8863  
 Fax +81-03-5369-8865