

Ecological Conservation and Improvement, Inc.  
**CHUBU ECOTEC CO.,LTD.**

Overseas Division / Fertilizer Division / General Affairs Department  
9FI A-PLACE KANAYAMA, 1-14-18 Kanayama, Naka-ku, Nagoya, 460-0022 Japan  
Tel: +81 52 332 5591 Fax: +81 52 332 5593



[www.ecotec-compo.com](http://www.ecotec-compo.com)



[overseas@chueco.co.jp](mailto:overseas@chueco.co.jp)



[fertilizer@chueco.co.jp](mailto:fertilizer@chueco.co.jp)

## Shake hands with the Earth



Ecological Conservation and Improvement, Inc.  
**CHUBU ECOTEC CO.,LTD.**



Optimization of COMPO S-90 for the specialization of input materials!

## Compo S-Series

Full-universal type of COMPO S-90 works well input objects with wide-rang whatever high and low gravity materials. New line-ups are based on S-90 and optimized the design of high gravity for QUATTRO and low gravity for NOPPO.



COMPO S-90 QUATTRO



COMPO S-90ET



COMPO S-90 NOPPO

### ■ Main Specifications

Model	S-90 QUATTRO		S-90ET		S-90 NOPPO	
Fermentation-tank volume	69m <sup>3</sup>		86m <sup>3</sup>		102m <sup>3</sup>	
Intake bucket volume	1.5m <sup>3</sup>		1.5m <sup>3</sup>		1.5m <sup>3</sup>	
Unit weight	27.0t		30.0t		35.0t	
Power frequency	50 Hz	60 Hz	50 Hz	60 Hz	50 Hz	60 Hz
Upper blower	-	-	2.0 kW	2.2 kW	-	-
Lower blower	11.6 kW × 2	9.0 kW × 2	11.6 kW × 2	9.0 kW × 2	11.6 kW × 2	9.0 kW × 2
Hydraulic unit			7.5 kW			
Hopper motor			0.2 kW			
Intake-bucket winch motor			2.2 kW			
Exhaust blower			2.2 kW			
Heater	4.0 kW		5.0 kW		4.0 kW	
Total	39.3kW	34.1kW	42.3kW	37.3kW	39.3kW	34.1kW
Total excluding heater	35.3kW	30.1kW	37.3kW	32.3kW	35.3kW	30.1kW

Note: Power requirements of auxiliary equipment vary according to the installation method.

### ■ Typical Electricity Usage

Monthly(W Heater)	23,902.5kw/M	20,158.5kw/M	26,062.5kw/M	22,462.5kw/M	23,902.5kw/M	20,158.5kw/M
Monthly(W/O Heater)	21,022.5kw/M	17,278.5kw/M	22,462.5kw/M	18,862.5kw/M	21,022.5kw/M	17,278.5kw/M

\*Heater is necessary when intake air temperature is below 5 degree. \*Lower blower of S-90 works single or double according to the gravity of input object.

### ■ Treatment Capacity per day

Capacity	Input object	Output product	Input object	Output product	Input object	Output product
Pig (78% water content)	6.0 t	1.5 t	6.0 t	1.5 t	5.0 t	1.3 t
Poultry (60% water content)	10.6 t	6.3 t	12.0 t	7.2 t	13.7 t	8.2 t

Note: Treatment capacities may vary according to season or local.

Up-date optional equipment for KAIZEN!

## Solution of Environment

Optimized position of exhaust outlet to minimize whole exhausting system for more efficiency and less operation. Whole exhausting systems can be design for location, elevation, surroundings, climate and material of deodorize.



### Renewed Exhaust System

#### Cyclone Dust Remover

- Micro-dust canceler.
- Head space reducer.
- Heat loss protection.
- Anti-rust design.
- Semi-maintenance free.

#### Venturi Water Deodorizer

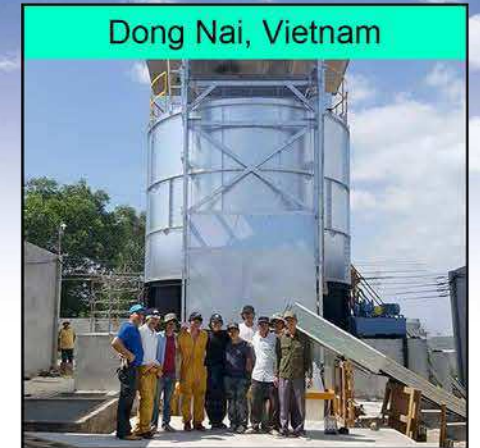
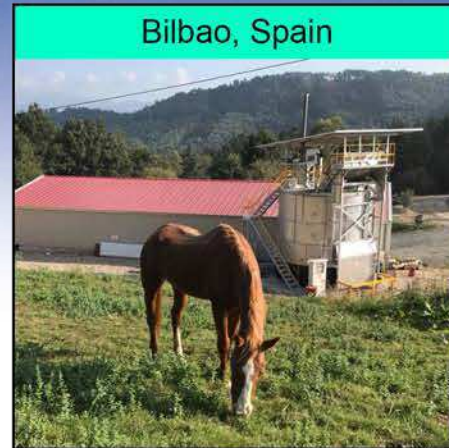
- Dissolution enhancer.
- Compact design.
- Sludge dropper.
- Anti-rust design.
- Semi-maintenance free.

#### Special Exhaust Blower

- Anti-rust design.
- Weather proof.
- Tough durability.
- High-efficiency motor.
- Produced by CHUBU ECOTEC made in Japan.











## COMPO S-Series produce High Quality Organic Fertilizer! Premium Organic Fertilizer

### Input object (Processing example)

\*Most of organic matter can be treat.



### Type of Fertilizer

Output Product (Premium Organic Fertilizer) is smooth powder shape. It helps beneficially yield rate for After Process.



Powder (Output Product)



Tablet (After Process)



Pellet (After Process)

N	P	K	Ca	Mg	Fe	Zn	Cu	Mn
4.0%	4.5%	3.1%	15.9%	1.2%	1,300mg/kg	320mg/kg	41mg/kg	370mg/kg

\*Above date is input object of Layer manure. The component fluctuates by the condition of input object.

Improvement of soil condition by supplying N-P-K contents, minerals, organic matter, and control pH balance.



## Company History and Trends in Machine Development

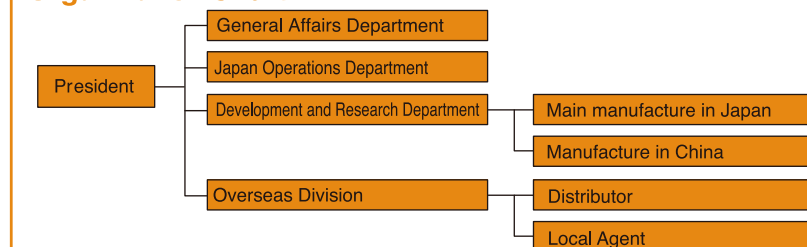


Headquarter in Japan



Main manufacture in Japan

### Organization Chart



### Cooperated Distributor and Agent

#### THAILAND

Chubu Ecotec Co., Ltd. Overseas division  
9FI A-KANAYAMA, 1-14-18 Kanayama, Naka-ku,  
Nagoya, Aichi, 460-0022, Japan  
Tel: +81 52 322 5591  
E-mail: [overseas@chueco.co.jp](mailto:overseas@chueco.co.jp)  
Web: [www.ecotec-compo.com](http://www.ecotec-compo.com)

#### VIETNAM

Viet Huy Trading and Service Co. Ltd.  
6-D5, Khu Biet Thu Thanh Xuan, Thanh Xuan, Quan 12,  
HCM City, Vietnam  
Tel: +84 9 1621 0867  
E-mail: [henry.hieu@viethuytrading.com](mailto:henry.hieu@viethuytrading.com)

#### SPAIN

Compo Global Solutions S.L.  
Goiru Kalea, 1, 20500 Arrasate, Gipuzkoa,  
Spain  
Tel: +38 9 4371 2072  
E-mail: [info@compogs.com](mailto:info@compogs.com)  
Web: [www.compogs.com](http://www.compogs.com)

#### CHINA

Chubu Ecotec Co., Ltd. China section  
9FI A-KANAYAMA, 1-14-18 Kanayama, Naka-ku,  
Nagoya, Aichi, 460-0022, Japan  
Tel: +81 52 332 5591  
E-mail: [eco-china@chueco.co.jp](mailto:eco-china@chueco.co.jp)  
Web: [www.ecotec-compo.com/cn](http://www.ecotec-compo.com/cn)